

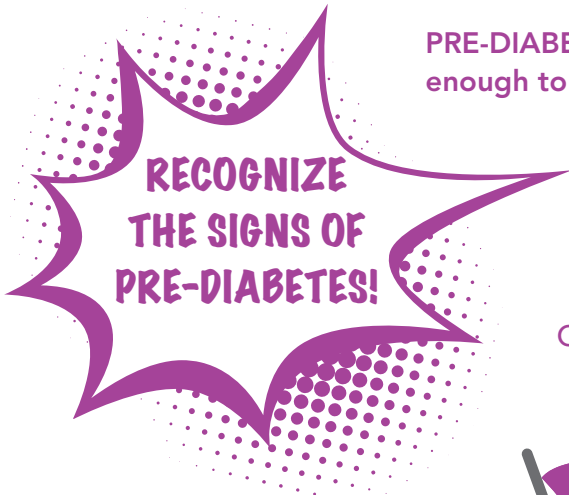
FOUR WAYS TO KNOCK OUT DIABETES

Join us in the fight against diabetes! Show us the ways you knock out diabetes by sharing photos of yourself eating healthy, incorporating exercise into your day, or attaining your blood sugar goals on Facebook, Twitter, and Instagram using #TKOdiabetes for the chance to win awesome prizes!

Overcoming diabetes can be difficult. Did you know that diabetes is an endocrine-related disease? So having good hormone health puts you in a better position to manage and beat the disease, and recognizing early signs can lead to prevention. Together we can knock out diabetes by making healthy choices, attaining blood glucose goals, and incorporating exercise.

Visit hormone.org for more information on diabetes.

PRE-DIABETES = blood glucose levels higher than normal, but not high enough to be diagnosed as diabetes



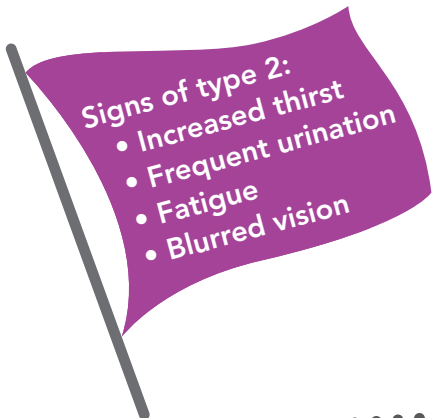
NORMAL	PRE-DIABETES	DIABETES
Blood glucose <100 mg/dL	100-125 mg/dL	≥126 mg/dL

One in three adults have pre-diabetes; 90% don't know they have it.



Other risk factors:

- Overweight, body mass index over 25
- Inactive
- Age 45+
- Family history of type 2 diabetes
- African-American, Hispanic, American Indian, Asian-American or Pacific Islander



- Gestational diabetes or gave birth to a baby who weighed more than 9 lbs.
- Polycystic ovary syndrome
- High blood pressure
- Regularly sleep less than six or more than nine hours per night

SERVING SIZE

Knowing the amount you should eat helps you correctly calculate nutritional value and effect on your blood glucose.

CARBOHYDRATES

Carbohydrates raise your blood sugar levels. Watching your carbohydrate intake helps keep the levels in your target range.

FIBER

Fiber improves blood sugar control, lowers cholesterol and helps you feel full so you don't overeat.



Nutrition Facts	
Serving Size 1 medium sweet potato, baked in skin, without salt 114g	
Amount Per Serving	
Calories 103	
% Daily Values*	
Total Fat 0g	0%
Saturated Fat 0g	0%
Trans Fat 0g	
Sodium 41mg	2%
Total Carbohydrate 24g	8%
Dietary Fiber 4g	16%
Sugars 7g	
Protein 2g	4%

*Percent Daily Values are based on a 2,000 calorie diet.

SET GOALS!

UNDERSTAND INSULIN AND BLOOD SUGAR

INSULIN: A hormone ... and a treatment!

A hormone made in the pancreas, insulin allows your body to use sugar (glucose) from carbohydrates in food you eat for energy or store it for future use. Insulin also helps keep your blood sugar level from getting **too high (hyperglycemia)** or **too low (hypoglycemia)**.

Blood sugar rises when you don't have enough insulin or your cells are unable to use the insulin already there.

Blood sugar goals (if you have diabetes):

- 70-130 mg/dL before meals
- Less than 180 mg/dL 1-2 hours after meals

Hypoglycemia may be caused by:

- Too much medication
- A missed meal
- A delayed meal
- Too little food eaten as compared to the amount of insulin taken

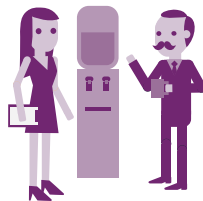
Hyperglycemia may be caused by:

- Not enough insulin (type 1)
- Enough insulin, but not effective (type 2)
- Too much food, too little exercise
- Illness such as cold or flu
- Stress (family, work)
- Dawn phenomenon (surge of hormones produced by body between 4-5 a.m.)

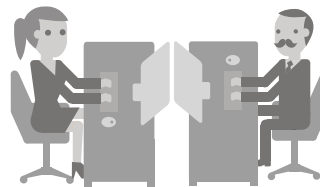
STAY ACTIVE EACH DAY!



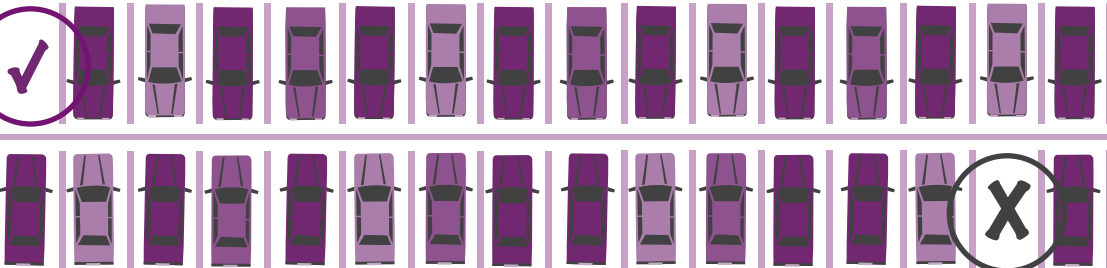
VS.



VS.



PARKING



PARKING

→→→ TO THE OFFICE

You have questions. We have answers.

The Hormone Health Network is your trusted source for endocrine patient education. Our free, online resources are available at hormone.org.

Additional editing by Stephen Colgan Clement, MD, Inova Fairfax Hospital